

Residential Courtyard - sc. 1:200



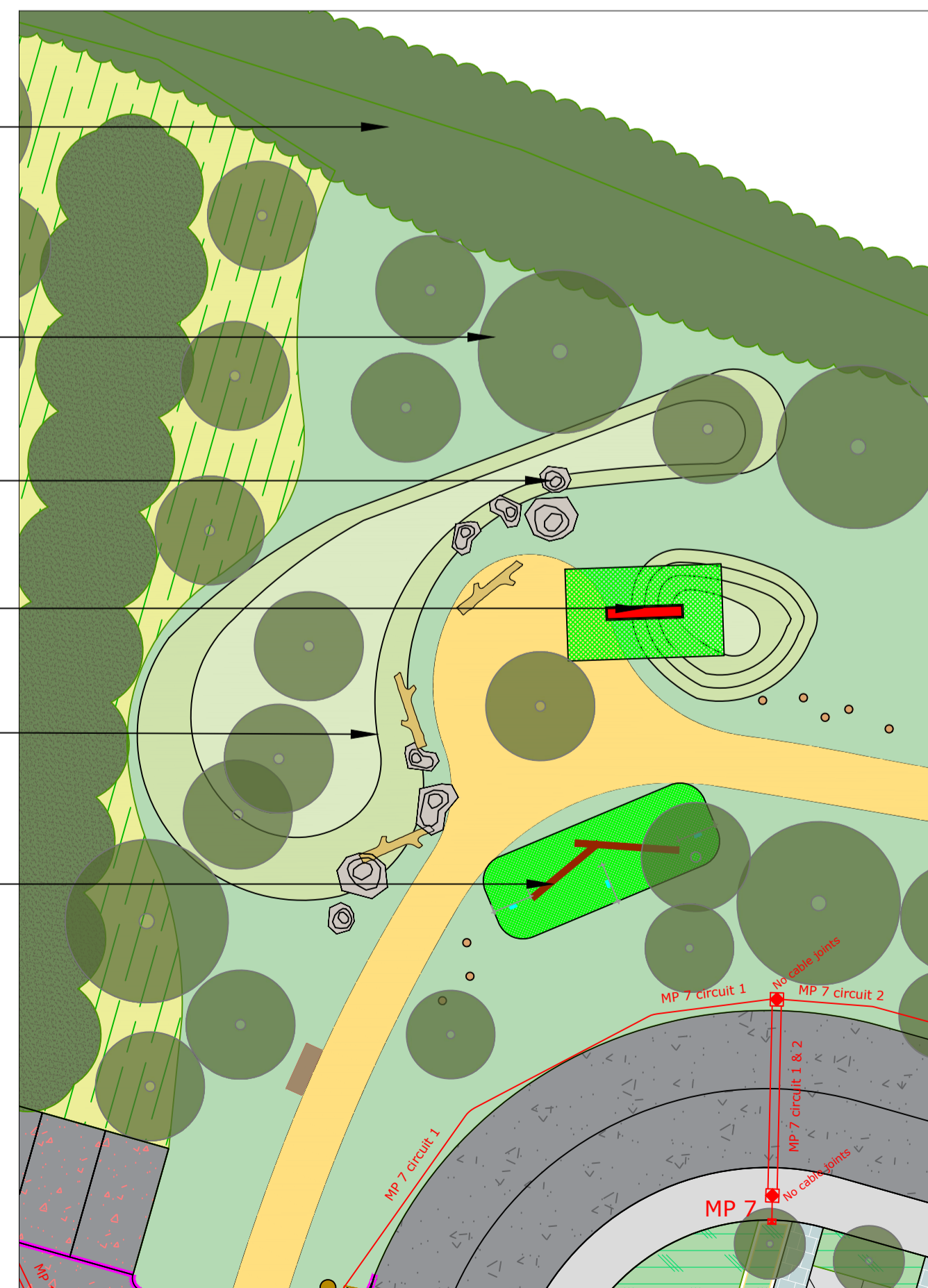
Kickabout Area  
Structured Play Elements  
Dust path

South West Entrance - sc. 1:200



Bicycle Storage  
Existing Hedgerow to be retained  
Woodland Planting  
Found play elements  
Seating Area  
Embankment Slide  
Grass Mound / Amphitheatre  
2m feature wall  
Balancing Beam  
1.8m timber panel & post fence

Natural Playground - sc. 1:200



Detail Location Plan - sc. 1:5000



**SOFT LANDSCAPE**  
Existing Hedgerows: Retained

**Proposed Tree Planting - 1509 No. Total**

Open Space / Parking Trees	Species Name	Specification	Centres
Norway Maple	<i>Acer platanoides</i> 'Columnare'	r/b 12-14cm gt.	600mm
Paperbark Maple	<i>Acer griseum</i>	r/b 16-18cm gt.	350mm
Birch	<i>Betula pendula</i> *	r/b 16-18cm gt.	350mm
Common Hazel	<i>Corylus avellana</i> *	r/b 12-14cm gt.	350mm
Ornamental Crabapple	<i>Malus 'John Downie'</i>	r/b 12-14cm gt.	350mm
London Plane	<i>Platanus x acerifolia</i>	r/b 18-20cm gt.	350mm
Wild Cherry	<i>Prunus avium</i> 'Plena'	r/b 14-16cm gt.	350mm
Birch Bark Cherry	<i>Prunus serrula</i> 'Tibetica'	r/b 12-14cm gt.	350mm
White beam	<i>Sorbus aria</i>	r/b 14-16cm gt.	350mm
Small-leaved Lime	<i>Tilia Cordata</i> 'Greenspire'	r/b 16-18cm gt.	350mm
Cypress Oak	<i>Quercus robur</i> 'Koster'	r/b 16-18cm gt.	350mm

**G1 Amenity Grass (300mm topsoil depth)**  
Coburn's Low Maintenance seed

**G2 Mounded Amenity Grass (300mm topsoil depth)**  
Coburn's Low Maintenance seed, Grass Mound - max 1m height

**B1 - Seasonal Bulbs (300mm topsoil depth)**  
Bulb planting in grass to be incorporated at 10 bulbs per sq. metre. Mowing to be reduced in accordance with suppliers instructions.

**M1 - Wild Flower Meadow**  
An appropriate dry meadow type with wildflowers for these areas would simulate NVC type MGS. Appropriate herbs for this type of meadow include:

*Agrostis capillaris*, *anthoxanthum odoratum*, *centaurea nigra*, *cygnosurus cristatus*, *pestuca rubra*, *gallium verum*, *leontodon autumnalis*, *leontodon hispidus*, *leucanthemum vulgare*, *lotus corniculatus*, *pimpinella saxifraga*, *plantago lanceolata*, *poa pratensis*, *primula veris*, *trifolium pratense*, *ranunculus acris*, *ranunculus bulbosus*, *thianthus minor*, *rumex acetosa*

**S1 - Shrub Planting: Public Areas (450mm topsoil depth)**

Common Name	Species Name	Specification	Centres
Dogwood	<i>Cornus sanguinea</i> *	c/g 3L 60-90cm ht.	600mm
Autumn Fern	<i>Dryopteris erythrosora</i>	c/g 3L 30-40cm ht.	350mm
Gold-Edged Plantain Lily	<i>Hostia fortunei</i> var. <i>aurummarginata</i>	c/g 2L 20-30cm ht.	350mm
'St John's wort'	<i>Hypericum perforatum</i> *	c/g 2L 40-60cm ht.	350mm
French Lavender	<i>Lavandula pedunculata</i>	c/g 3L 20-30cm ht.	450mm
Snowy Mermaid	<i>Liberia formosa</i> *	c/g 2L 30-40cm ht.	450mm
Chinese fountain grass	<i>Pennisetum alopecuroides</i>	c/g 2L 40-60cm ht.	450mm

**S2 - Residential Edging Buffer (450mm topsoil depth)**

Common Name	Species Name	Specification	Centres
Arrowwood	<i>Viburnum x bodnantense</i>	b/r 60-90cm ht.	700mm
Guelder Rose	<i>Viburnum opulus</i> **	b/r 60-90cm ht.	700mm
Dogwood	<i>Cornus sanguinea</i> *	b/r 60-90cm ht.	700mm
Ribbon Grass	<i>Phalaris feesey</i>	c/g 5L 20-30cm ht.	400mm
Karl F. Reed Grass	<i>Calamagrostis</i> 'Karl Foerster'	c/g 2L 30-40cm ht.	700mm
Miscanthus	<i>Miscanthus sinensis</i> 'Gracillimus'	c/g 2L 30-40cm ht.	700mm
Lonicera	<i>Lonicera pileata</i>	c/g 2L 20-30cm ht.	500mm

**S3 - Residential Edging Buffer w/ Textured Screening (450mm topsoil depth)**

Common Name	Species Name	Specification	Centres
Arrowwood	<i>Viburnum x bodnantense</i> 'Dawn'	b/r 60-90cm ht.	700mm
Guelder Rose	<i>Viburnum opulus</i> **	b/r 60-90cm ht.	700mm
Dogwood	<i>Cornus sanguinea</i> *	b/r 60-90cm ht.	700mm
Ribbon Grass	<i>Phalaris feesey</i>	c/g 5L 20-30cm ht.	400mm
Karl F. Reed Grass	<i>Calamagrostis</i> 'Karl Foerster'	c/g 2L 30-40cm ht.	700mm
Miscanthus	<i>Miscanthus sinensis</i> 'Gracillimus'	c/g 2L 30-40cm ht.	700mm
Lonicera	<i>Lonicera pileata</i>	c/g 2L 20-30cm ht.	500mm
Stinking hellebore	<i>Heleborus foetidus</i> *	c/g 2L 20-30cm ht.	300mm
Dogwood	<i>Cornus alba</i> **	c/g 2L 30-40cm ht.	500mm
Bell heather	<i>Erica cinerea</i> **	c/g 2L 30-40cm ht.	500mm
Alum Root	<i>Heuchera</i> 'Palace Purple'	c/g 2L 20-30cm ht.	300mm
Mugwort	<i>Artemisia vulgaris</i> *	c/g 2L 30-40cm ht.	400mm
Lady Fern	<i>Athyrium filix-femina</i> *	c/g 2L 30-40cm ht.	500mm
Curry plant	<i>Helichrysum italicum</i>	c/g 2L 30-40cm ht.	400mm

**S4 - Shrub Planting: Front of Houses (450mm topsoil depth)**

Common Name	Species Name	Specification	Centres
Astilbe Japonica hybrid	<i>Astilbe</i> 'Rheinland'	c/g 2L 20-30cm ht.	350mm
St John's wort 'Hidcote'	<i>Hypericum</i> 'Hidcote'	c/g 3L 30-40cm ht.	600mm
David viburnum	<i>Viburnum davidii</i>	c/g 3L 30-40cm ht.	450mm
English Lavender	<i>Lavandula</i> 'Hidcote'	c/g 2L 30-40cm ht.	450mm
Dwarf Sweet Box	<i>Sarcococca humilis</i> *	c/g 2L 30-40cm ht.	450mm
Japanese segde	<i>Carex oshimensis</i> 'Evergold'	c/g 3L 30-40cm ht.	450mm
Rosemary	<i>Rosmarinus officinalis</i> 'Roseus'	c/g 2L 30-40cm ht.	500mm
Lonicera	<i>Lonicera pileata</i>	c/g 2L 20-30cm ht.	500mm

**S5 - Undergrowth Planting Shrub (450mm topsoil depth)**

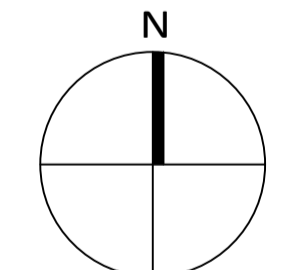
Common Name	Species Name	Specification	Centres
Elder	<i>Sambucus nigra</i> *	b/r 60-90cm ht.	700m
Rosemary	<i>Rosmarinus officinalis</i> 'Roseus'	c/g 2L 30-40cm ht.	500mm
Box-leaved Holly	<i>Ilex crenata</i> 'Helleri'	b/r 60-90cm ht.	700m
Palace Purple	<i>Heuchera villosa</i>	c/g 2L 30-40cm ht.	450mm
Peppermint	<i>Mentha x piperita</i> *	c/g 2L 20-30cm ht.	300mm
Lamb's Ear	<i>Stachys byzantina</i> **	c/g 2L 20-30cm ht.	300mm
Wormwood	<i>Artemisia</i> 'Povis Castle'	c/g 2L 30-40cm ht.	400mm
Lady Fern	<i>Athyrium filix-femina</i> *	c/g 2L 30-40cm ht.	500mm
Curry plant	<i>Helichrysum italicum</i>	c/g 2L 30-40cm ht.	400mm
Hedge veronica	<i>Hebe x franciscana</i> *	c/g 2L 30-40cm ht.	400mm

**H1 - Structural Hedgerow (450mm topsoil depth)**

Common Name	Species Name	Specification	Centres
Ebbing's Silverberry	<i>Eleagnus x ebbingei</i>	c/g 2L 30-40cm ht.	300mm
Holly	<i>Ilex aquifolium</i> *	c/g 2L 20-40cm ht.	300mm
Green Privet	<i>Ligustrum Ovalifolium</i> *	c/g 2L 40-60cm ht.	300mm

\*Species Native to Ireland  
\*\*Plants for Pollinators  
These plants will provide nectar and pollen for bees and the many other types of pollinating insects.

- HARD LANDSCAPE**  
Homezone Residential Roadway - Shared Surface - 8085sq.m  
Tarmacadam, hot rolled with red graphic chipping, with in-situ concrete kerbs
- Main Roadway**  
Tarmacadam, with in-situ concrete kerbs
- Concrete Footpath**  
In-situ concrete. Brushed with trowel edge finish with PC concrete kerbs.
- Homezone Area Footpath - 5100 sq.m (to Engineer's Specification)**  
Conflat Grouted Macadam or Marshall asphalt, hot rolled with light grey/white graphic chipping.
- Pedestrian Paving - 1798 sq.m (to Engineer's Specification)**  
PC granite composite block paving or similar, dim. 200x100x80mm and 100x100x80mm mix, colour to be decided 60:20:20, Staggered bond pattern, or similar, as approved
- Pedestrian Paving Trim - 113 sq.m**  
PC granite composite block paving or similar, dim. 200x100x80mm and 100x100x80mm mix, colour to be decided 60:20:20, Staggered bond pattern, or similar, as approved
- Feature Paving (Front of House & Seating Area) - 5896 sq.m**  
PC granite composite block paving or similar, dim. 200x100x80mm and 100x100x80mm mix, colour Silver, Blanc, Mid Grey 60:20:20, Staggered bond pattern, or similar, as approved
- Plaza Feature Paving - 422 sq.m**  
Tobemore City Pavers, dim. 300x150x100mm, colour Graphite with contrasting tactile pavers. Stretcher bond pattern, or similar, as approved
- Plaza Feature Paving - 434 sq.m**  
Tobemore City Pavers, dim. 300x150x100mm, colour Charcoal with contrasting tactile pavers. Stretcher bond pattern, or similar, as approved
- Compacted Gravel Surface - 939sq.m**  
Ballylusk 10mm and down, or similar, as approved
- Own Curtilage Parking - Permeable Surface - 1470 sq.m**  
Tobemore Hydropave Pedestrel Pavers, dim. 200x100x80mm, colour Heather (Parking Dividers to be Silver, Stretcher bond pattern, or similar, as approved)
- Roadside Parking - Permeable Surface - 1300 sq.m**  
Tobemore Hydropave Pedestrel Pavers, dim. 200x100x80mm, colour Natural (Parking Dividers to be Charcoal), Stretcher bond pattern, or similar, as approved.
- Cycle Path - 5211 sq.m (to Engineer's Specification)**  
Tarmacadam, colour to be decided, or similar, as approved
- Tabled Intersection (to Engineer's Specification)**
- LANDSCAPE FURNITURE / FEATURES**  
**Benches - 50 no.** Final locations to be determined  
Hartecast HC2001S Bench or similar, as approved. Length 1950mm, width 540mm, height 450mm, powder coated steel, fixed to the ground by means of anchoring bolts
- Bins - Final locations to be determined**  
Hartecast (HC2054) or similar, as approved, colour TDB
- Bollards - Final locations to be determined**  
Hartecast (HC2062) brushed metal retractable bollards or similar approved
- Sheltered Cycle Stands - Final locations to be determined**  
Sheffield Cycle Stands 1000mm x 1000mm or similar, as approved
- Tree Grills - 3 no.**  
1000mm x 1000mm cast iron
- Playground Surfacing - 345 sq.m**  
Wetpour Safety Surface
- Found Play Elements**  
Natural Play Elements - mounding, stepping stones, balance logs, vertical logs, as agreed prior to taking in charge
- Structured Play Elements**  
Multi-age play elements
- Painted Games**  
Thermoplastic painted games on concrete
- Boundary Fence (1.2m high)**  
Box-top railing to sides with powder coating, double leaf gates
- Boundary Treatment (1.2m high)**  
Timber Post & 3 Rail Fence or Similar Approved
- Feature Wall (2m high)**  
Stone or Wet dash with brick finish
- Feature Wall (1.2m high)**  
Stone or Wet dash with brick finish
- Residential Boundary Fence (1.8m high)**  
Timber panel & concrete post fence or Similar Approved
- Residential Rear Boundary Wall (2m high)**  
Concrete block wall with concrete coping



REV	DATE	BY	CHECKED	DESCRIPTION
L	15/02/21	PL	RMD	Planning Update
K	18/12/20	PL	RMD	Planning Update
J	23/11/20	PL	RMD	Planning Update
I	03/11/20	PL	RMD	Planning Update
H	21/10/20	PL	RMD	Planning Update
G	25/09/20	PL	RMD	Planning
F	17/09/20	PL	RMD	Planning Draft
E	19/08/20	PL	RMD	Planning Draft
D	23/06/20	MIR	RMD	Revised Layout
C	05/02/20	MOT	RMD	Revised Layout
B	30/09/19	MIR	RMD	Revised Layout - Engineer Overlay
A	16/09/19	MIR	RMD	Revised Layout

Project Title:	Lissywoolen, Athlone	Dwg No.:	DWG 2.5
Client:	Alanna Roadbridge Developments	Scale:	Varies
Drawing Title:	Landscape Details - Playground Spaces	Date:	15/02/21
Job No.:	1463		

**Ronan MacDiarmada + Associates Ltd.**  
Landscape Architects and Consultants.

5 Tootenhill, Rathcoole, Co. Dublin  
tel: +353 1 412 4476 mob: 086 26 25 438  
fax: +353 1 401 3748 e-mail: ronan@mda.ie